

# Lenovo

Chromebook 2nd Gen Series

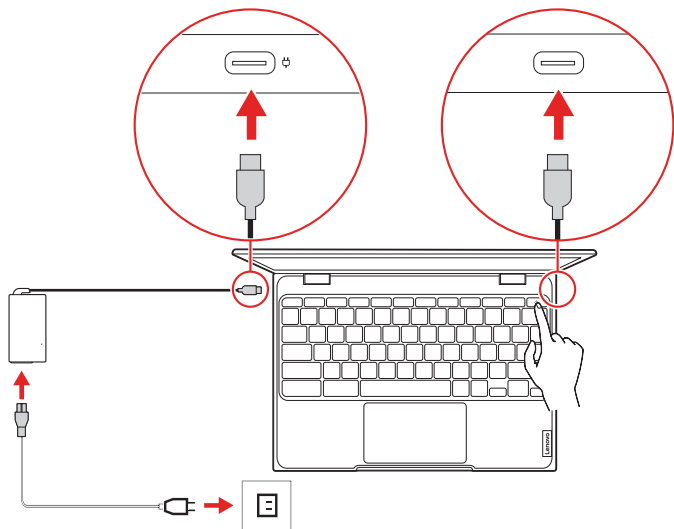
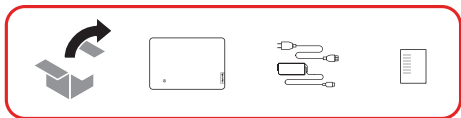
## SETUP GUIDE

The Lenovo logo is a red vertical rectangle with the word "Lenovo" written in white, oriented vertically from bottom to top.

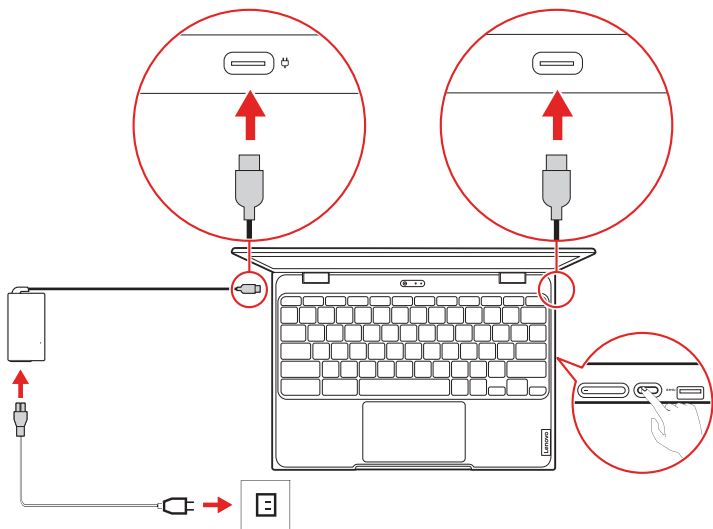
Lenovo

# Initial Setup

---



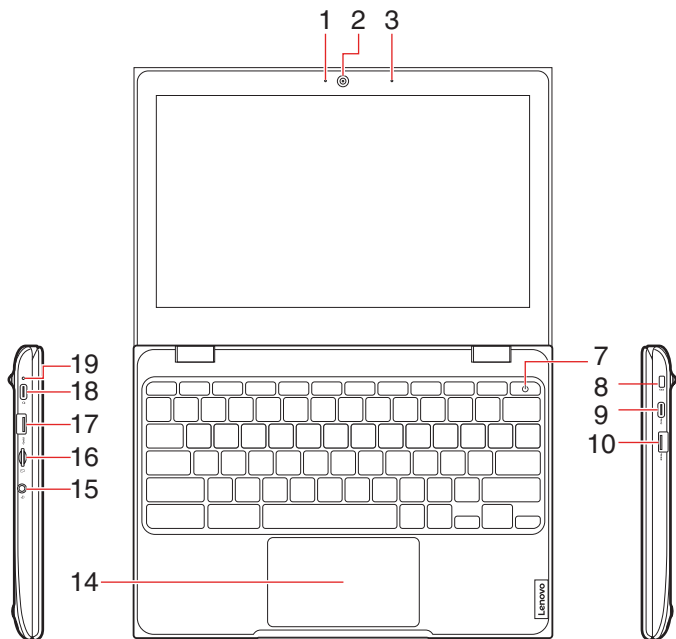
Lenovo 100e Chromebook 2nd Gen



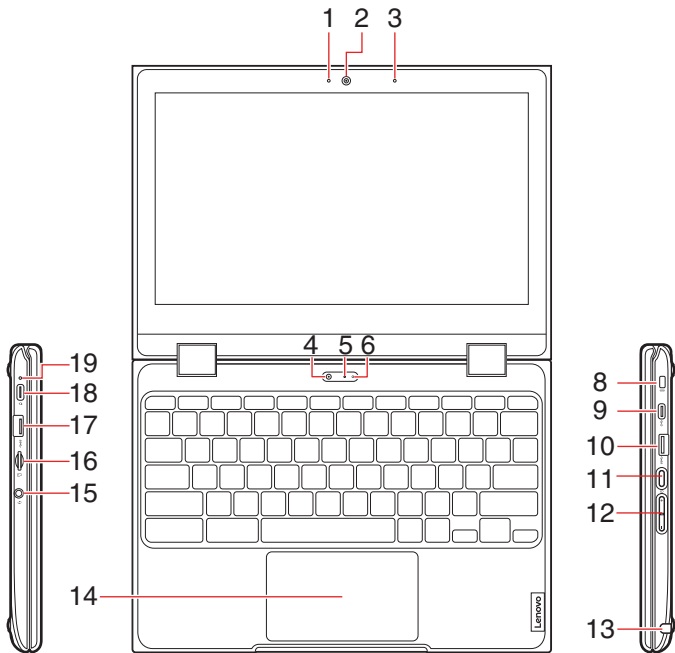
Lenovo 300e/500e Chromebook 2nd Gen

# Overview

---



Lenovo 100e Chromebook 2nd Gen



Lenovo 300e/500e Chromebook 2nd Gen

1. Front webcam light
2. Front webcam
3. Microphone
4. WorldFacing webcam\*
5. WorldFacing webcam light\*
6. Microphone\*
7. Power key
8. Security-lock slot
9. USB-C™ connector
10. USB 3.0 (Type-A) connector
11. Power button and power light\*
12. Volume buttons\*
13. Stylus\*
14. Touchpad
15. Combo audio connector
16. MicroSD slot
17. USB 3.0 (Type-A) connector
18. dc-in / USB-C connector
19. dc-in light

\* For selected models

# Additional information

## Specific Absorption Rate (ICNIRP)

YOUR DEVICE MEETS INTERNATIONAL GUIDELINES FOR EXPOSURE TO RADIO WAVES. Your device is a radio transmitter and receiver. It is designed not to exceed the limits for exposure to radio waves (radio frequency electromagnetic fields) recommended by international guidelines. The guidelines were developed by an independent scientific organization (ICNIRP) and include a substantial safety margin designed to assure the safety of all persons, regardless of age and health. The radio wave exposure guidelines use a unit of measurement known as the Specific Absorption Rate, or SAR. The Europe 10g SAR limit for mobile devices is 2.0 W/kg. Tests for SAR are conducted using standard operating positions with the device transmitting at its highest certified power level in all tested frequency bands. The highest SAR values under the ICNIRP guidelines for your device are as follows:

**Maximum body-worn SAR with 0 mm separation distance: 0.12 W/kg (Lenovo 100e Chromebook 2nd Gen), 0.63 W/kg (Lenovo 300e/500e Chromebook 2nd Gen)**

During use, the actual SAR values for your device are usually well below the values stated. This is because, for purposes of system efficiency and to minimize interference on the network, the operating power of your mobile device is automatically decreased when full power is not needed for the data connection. The lower the power output of the device, the lower its SAR value. If you are interested in further reducing your RF exposure then you can easily do so by limiting your usage or simply keeping the device away from the body.

## European Union — compliance with the Radio Equipment Directive

Hereby, Lenovo (Singapore) Pte. Ltd., declares that the radio equipment type 100e Chromebook 2nd Gen, 300e Chromebook 2nd Gen, 500e Chromebook 2nd Gen are in compliance with Directive 2014/53/EU.

The full text of the system EU declaration of conformity and the EU wireless module declarations are available at the following Internet addresses:

- For notebook computers:  
<https://www.lenovo.com/eu-doc-notebooks>
- For tablets:  
<https://www.lenovo.com/eu-doc-tablets>

This radio equipment operates with the following frequency bands and maximum radio-frequency power:

Technology	Frequency band [MHz]	Maximum transmit power
WLAN 802.11b/g/n	2400 - 2483.5	< 20 dBm
WLAN 802.11a/n/ac	5150 - 5725	< 23 dBm
WLAN 802.11a/n/ac	5725 - 5875	< 13.98 dBm
Bluetooth BR/EDR/LE	2400 - 2483.5	< 20 dBm

**First Edition (December 2018)**

**© Copyright Lenovo 2018.**

LIMITED AND RESTRICTED RIGHTS NOTICE: If data or software is delivered pursuant to a General Services Administration "GSA" contract, use, reproduction, or disclosure is subject to restrictions set forth in Contract No. GS-35F-05925.

**Reduce | Reuse | Recycle**

